

Early On[®] Michigan

Part C of IDEA





Michigan Part C/*Early On*®

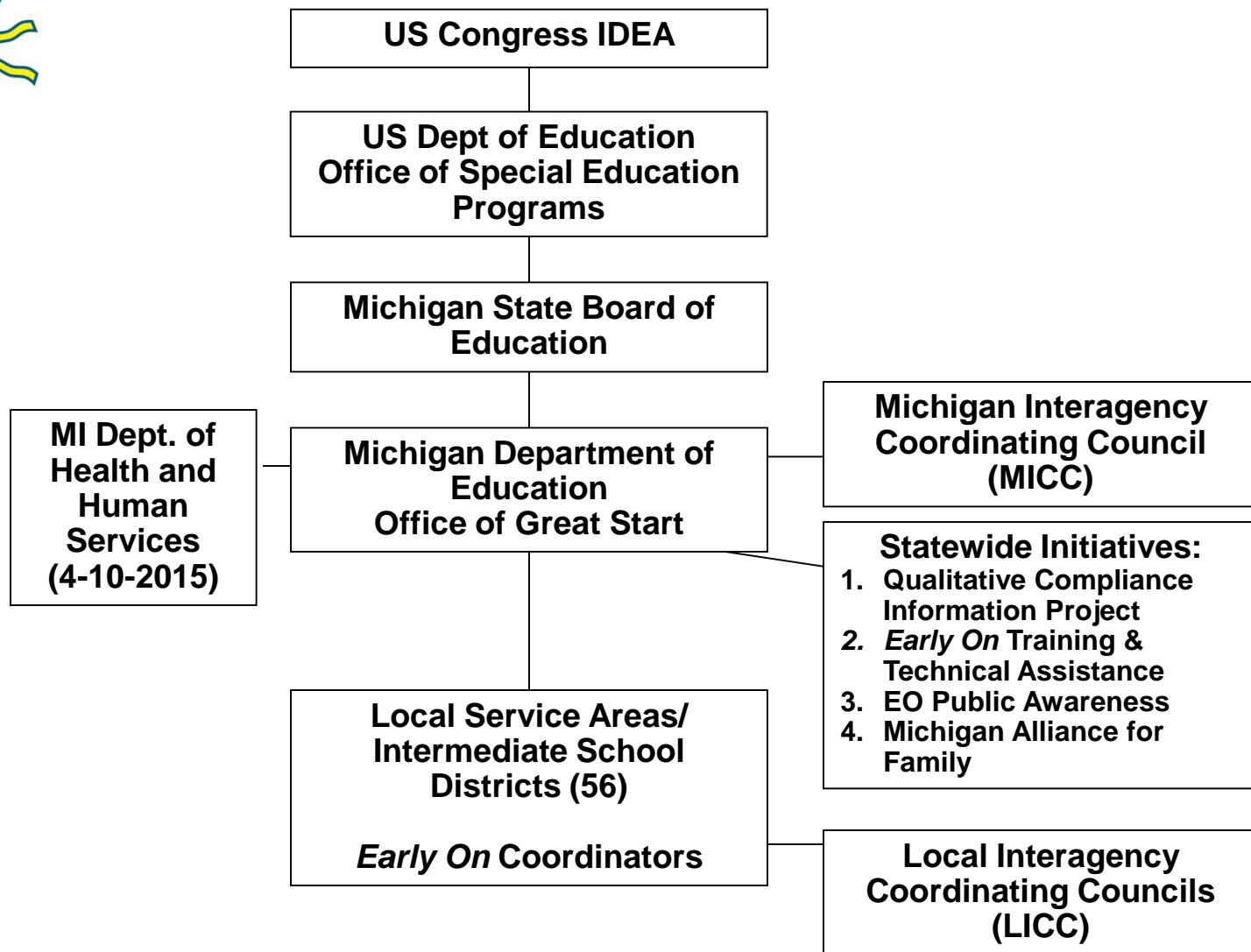
- Lead Agency-Michigan Department of Education
- Birth Mandate State-Promised special education support from birth to 26 (prior to federal government)
- Partner with state agencies to support eligible children and their families



Funding

- School Based Services Medicaid
- Local Special Education funds
- Part C IDEA federal funds-\$11.8 million

Structure of Part C in Michigan



What is *Early On*®

- A statewide system of early intervention services mandated by federal legislation designed to connect and provide families social, health and educational supports and services that will promote the development of their infants and toddlers with special needs



What is *Early On*®

- Based on partnerships between families and service providers and on collaboration among community agencies, organizations and private practitioners;
- Emphasizes early identification and early services



Eligibility for *Early On* Services

- Any infant or toddler with an established condition (i.e., a physical or mental condition likely to lead to a delay)
- Any infant or toddler with at least a 20% developmental delay or 1 standard deviation below the mean
- Any delay for a child < 2 months



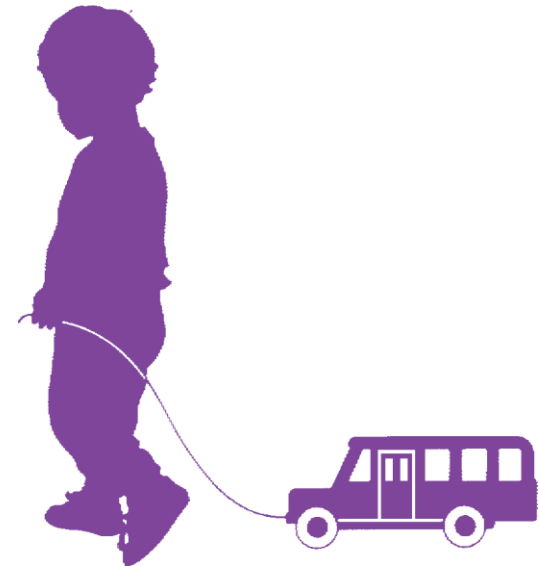
Categories of Established Conditions

- Chromosomal anomaly/genetic disorders
- Neurological disorders
- Congenital malformations
- Inborn errors of metabolism
- Sensory disorders
- Atypical developmental disorders
- Severe toxic exposure
- Chronic illnesses
- Severe infectious diseases



Developmental Delay in one of more of the following categories:

- Physical (including hearing and vision)
- Gross and Fine Motor Development
- Communication Development
- Cognitive Development
- Social/Emotional Development
- Adaptive (self-help)





Early On

- FFY 2013 served 8984 children and their families at a “point in time”
- Served 17,781 in a 12-month period
- 40% of the children receive Michigan Special Education support
- 60% are Part C Only

The *Early On* Process

- A referral is made because there is a suspicion that a child may be showing a delay or have an established condition;
- Contact is made with the family;
- An interview with the family regarding their concerns, priorities and daily routines;
- A multidisciplinary developmental evaluation occurs.



The *Early On* Process

- A report is written including:
 - Results of the evaluation
 - Observation of parent and child
 - Developmental History
 - Health Status
 - Results from the vision and hearing screening
- An Individualized Family Service Plan (IFSP) meeting with the family.



The *Early On* Process

- The IFSP meeting will include:
 - Results of the evaluation
 - Concerns of the parents
 - Outcomes desired by the parents for their child
 - Outcomes in natural environments and daily routines
 - Supports needed by the family
 - Early intervention services identified to support the outcomes



Services Provided by *Early On*

- Assistive Technology Services
- Audiology Services
- Family Training, Counseling & Home Visits
- Nursing Services
- Nutrition Services
- Occupational Therapy
- Speech Therapy
- Physical Therapy
- Special Instruction
- Social Work
- Psychological Services
- Health Services
- Service Coordination
- Transportation
- Vision Services





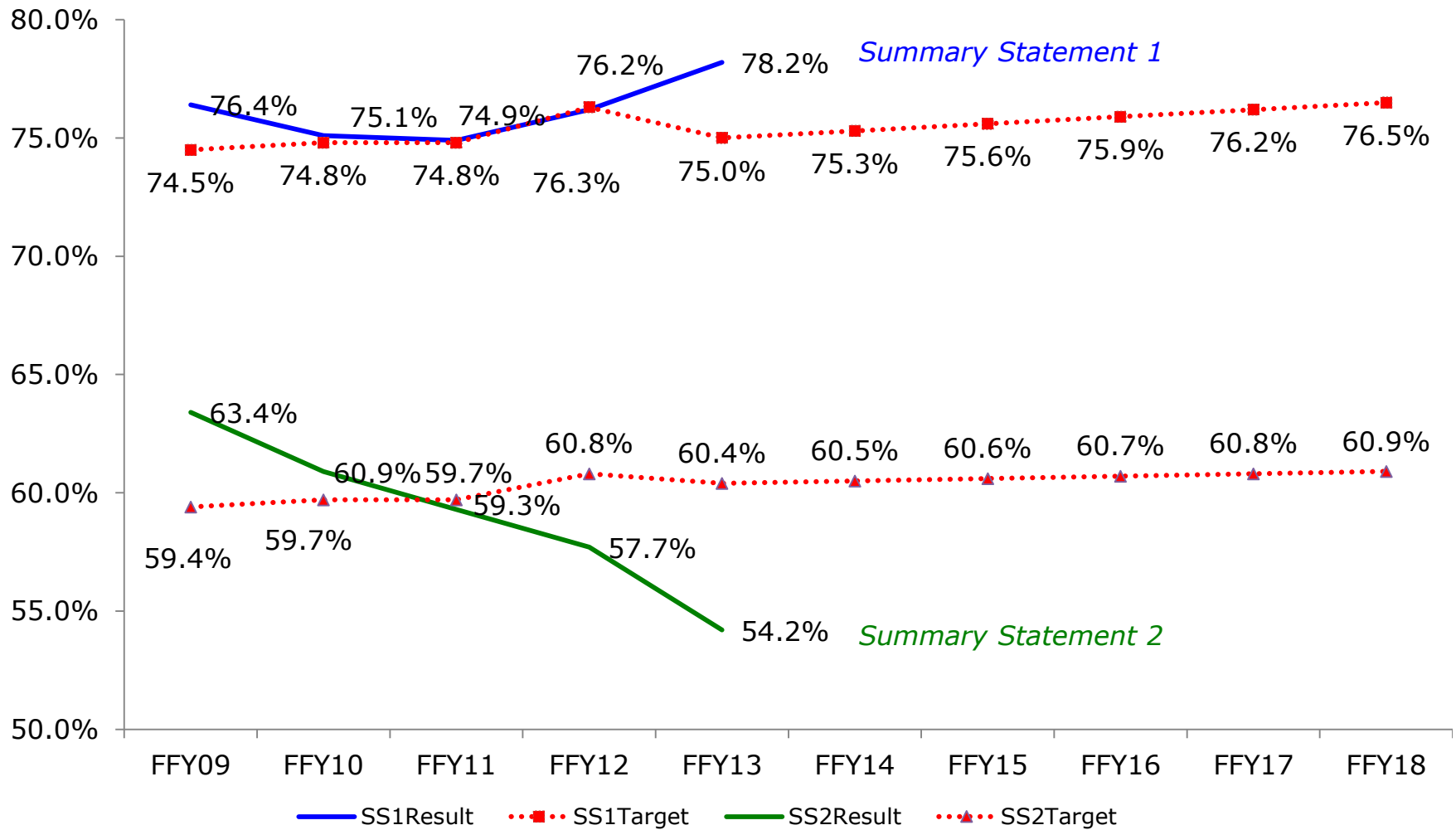
Child Outcomes/State Performance Plan Indicator 3

Percent of infants/toddlers with IFSPs who demonstrate improved:

- Positive social-emotional skills
- Acquisition of knowledge and skills (language and communication)
- Use of behaviors to meet their needs

Targets and Results Across Years

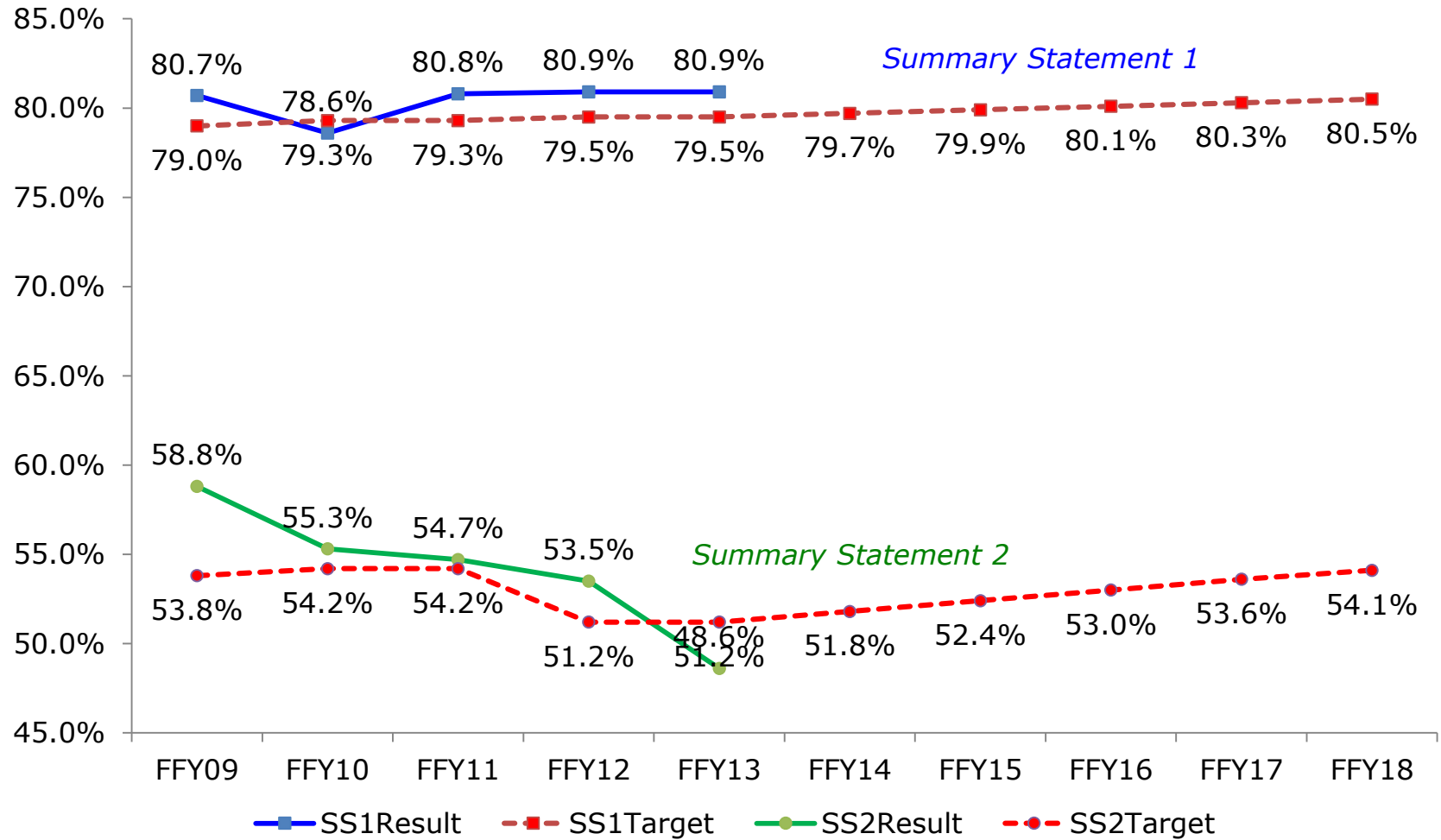
3A: positive social-emotional skills



Percent of progress **within age expectations** (SS2 Result) declined across 5 years, from **63.4%** to **54.2%**.

Targets and Results Across Years

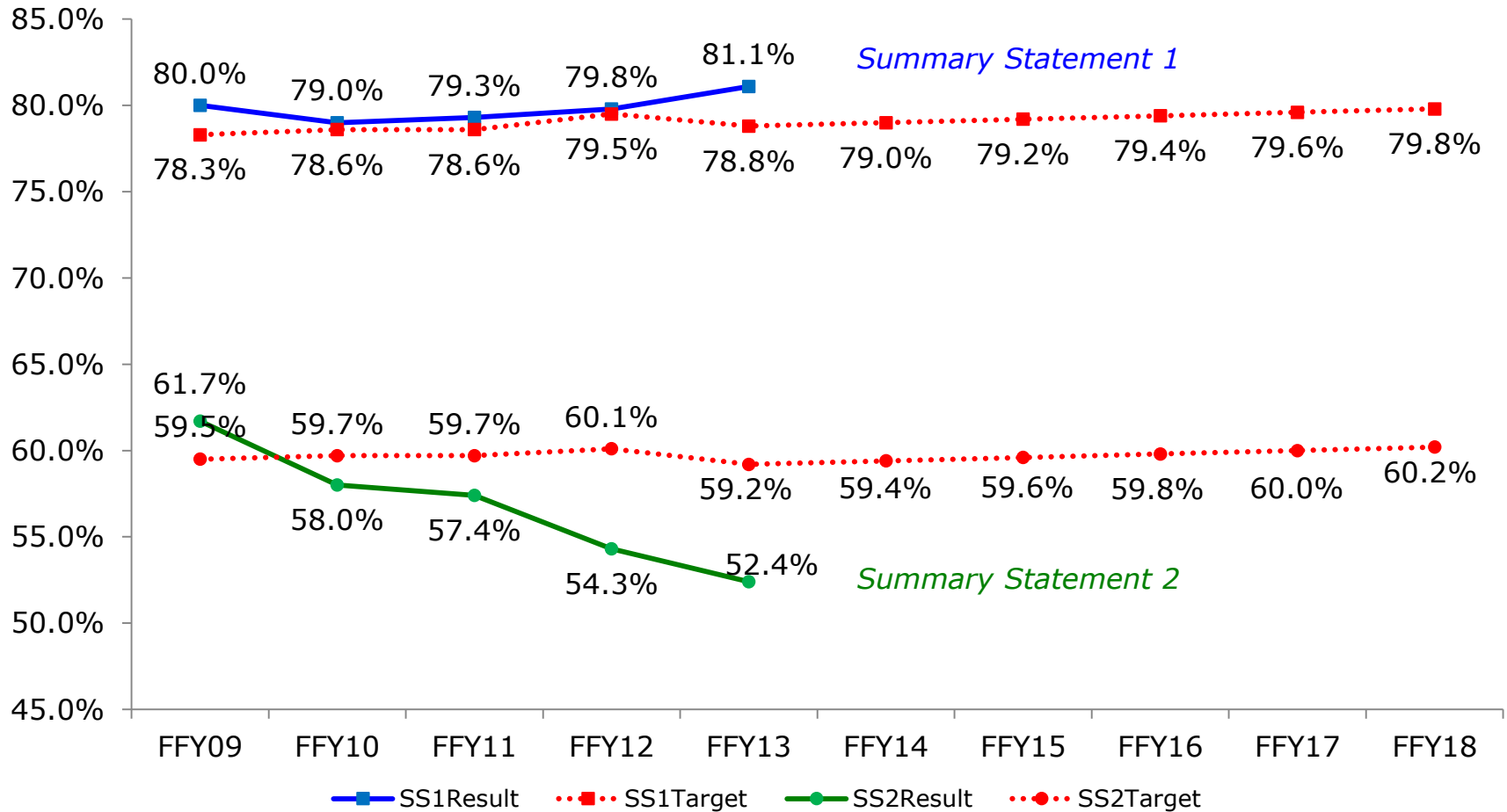
3B: acquisition and use of knowledge and skills



Here, too.....from 58.8% to 48.6%.

Targets and Results Across Years

3C: use of appropriate behaviors to meet needs



Here again.....from 61.7% to 52.4%.



Office of Auditor General's Report

FINDINGS

- Part C Only need to receive array of EIS by qualified personnel
- Implement measures to ensure federal requirements for Part C Only participants

MDE RESPONSE

- Request additional funds and update Personnel Standards
- Increase monitoring



THANK YOU

For additional information:

Vanessa Winborne, Coordinator

Office of Great Start

Michigan Department of Education

winbornev@michigan.gov

517-335-4865

or

www.1800.EarlyOn.org