



REGIONAL CHILD CARE COALITIONS

Pre-Application Technical Assistance Webinar

JANUARY 7, 2025



WELCOME & THANK YOU!

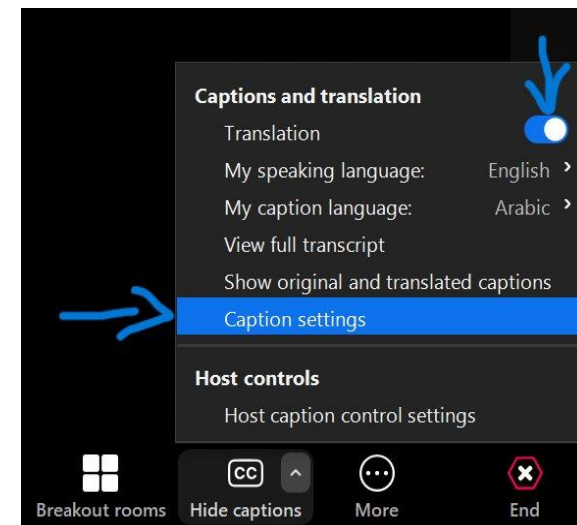
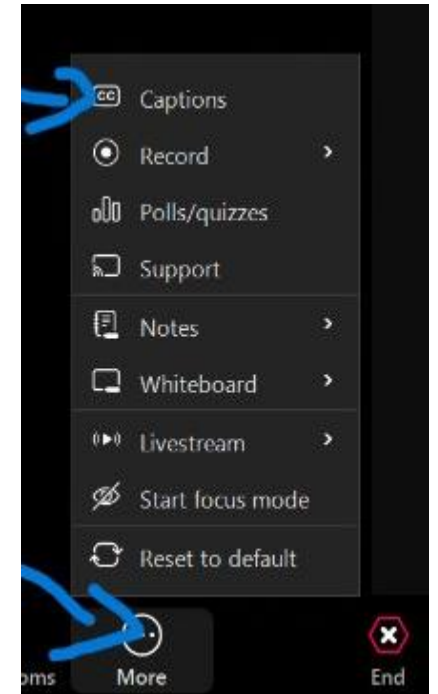
Regional Child Care Coalitions Pre-Application TA
Webinar Attendees

Let's get started!

Translated Captions Available

- To access **translated captions**:
 - Bottom Zoom Bar - Click "**More**"
 - Click on the Captions icon
 - Click the switch that says "**Translation**"
 - Select your preferred language

- To modify the **caption size or color for easier readability**:
 - Click on Captions again and this time click "**Caption settings**" in the menu

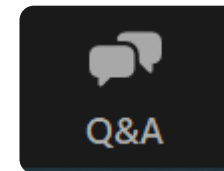


Let's get started!

Housekeeping



- Today's Webinar is scheduled to last *up to* 2 hours
- The Webinar is being recorded and will be shared with those in attendance (including slides)
- All participants will be muted throughout
- Submit all questions through the Q&A button
- Questions submitted here can be viewed and upvoted



AGENDA

01 **INTRO TO CHILD CARE INNOVATION FUND + RCCC PROJECT**

- CCIF Purpose + Priorities
- Eligibility
- Project Purpose, Intended Impact, + Scope of Work
- Application Timeline

02 **COMPETITIVE FUNDING OPPORTUNITY**

- Coverage
- Project Timeline
- Coalition Membership + Metrics
- Partnership Table

03 **APPLICATION REVIEW + SELECTION PROCESS**

- Application Portal
- Application Questions + Scoring Rubrics
- Budget + Risk Assessment
- Application Review Process +Timeline

Regional Child Care Coalitions Pre-Application TA Webinar Hosts



Joan Blough
Senior Director, Child
Care Innovation Fund,
ECIC



Kortney D'Angelo
Senior
Implementation
Consultant, ECIC



Misti Conley-Rogers
Project Manager,
ECIC



Andrea Ayotte
Program Grants
Manager, ECIC



Kelly Kreider
Director of Program
Compliance & Grants
Administration, ECIC

Learning Objectives

- 1 Summarize the purpose and goals of the Regional Child Care Coalition (RCCC) Project
- 2 Determine organizational eligibility for RCCC funding opportunity
- 3 Describe the Application Review and Selection Process
- 4 Use online portal (Fluxx) to submit an application
- 5 Choose technical assistance opportunity fit for needs

Eligibility

This funding opportunity will not award individual licensed child care providers or businesses.

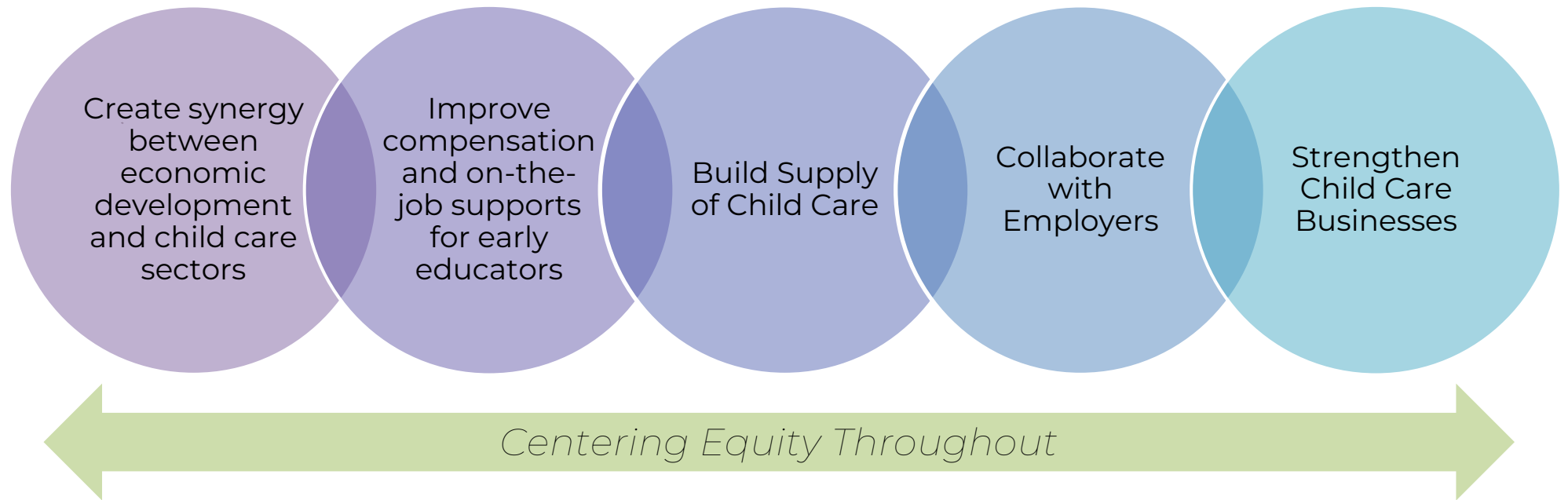
- Regional Child Care Coalitions must be led or co-led by an economic development organization (EDO).
- Regional Child Care Coalitions may include employers and other public, private, and/or philanthropic community or regional organizations with an interest in child care supply building.

Purpose of ECIC's Child Care Innovation Fund

- Collaborate with regional and community partners to pilot common-sense business and financing solutions for child care.
- Invest in innovations designed to benefit employers, working families, child care business owners and early educators.
- Educate and advocate for scaling proven child care solutions across Michigan.



Child Care Innovation Fund Priorities





Answering your questions

Why is the Regional Coalition work important?

- Child care is an essential part of employment infrastructure; as with roads and bridges, parents require child care to get to work. By investing in child care infrastructure as with bridges and roads, [we] can support economic growth and family economic security.
(Mapping American's Child Care Deserts, Center for American Progress, 2017)
- A strong child care sector is essential to Michigan's economic recovery and future growth – it simultaneously benefits children, working families, employers, child care businesses, and communities.
- Unprecedented opportunity to design, finance and build, child care facilities and workforce to meet the needs of working families and their employers in your region.



Funds Available + Payment Schedule

Funds Available

- Applicants may propose budgets of up to \$100,000 for the initial 6-month period of performance.
- Funds available in subsequent years will be determined by the state's annual legislative appropriation to MiLEAP.

Payment Schedule

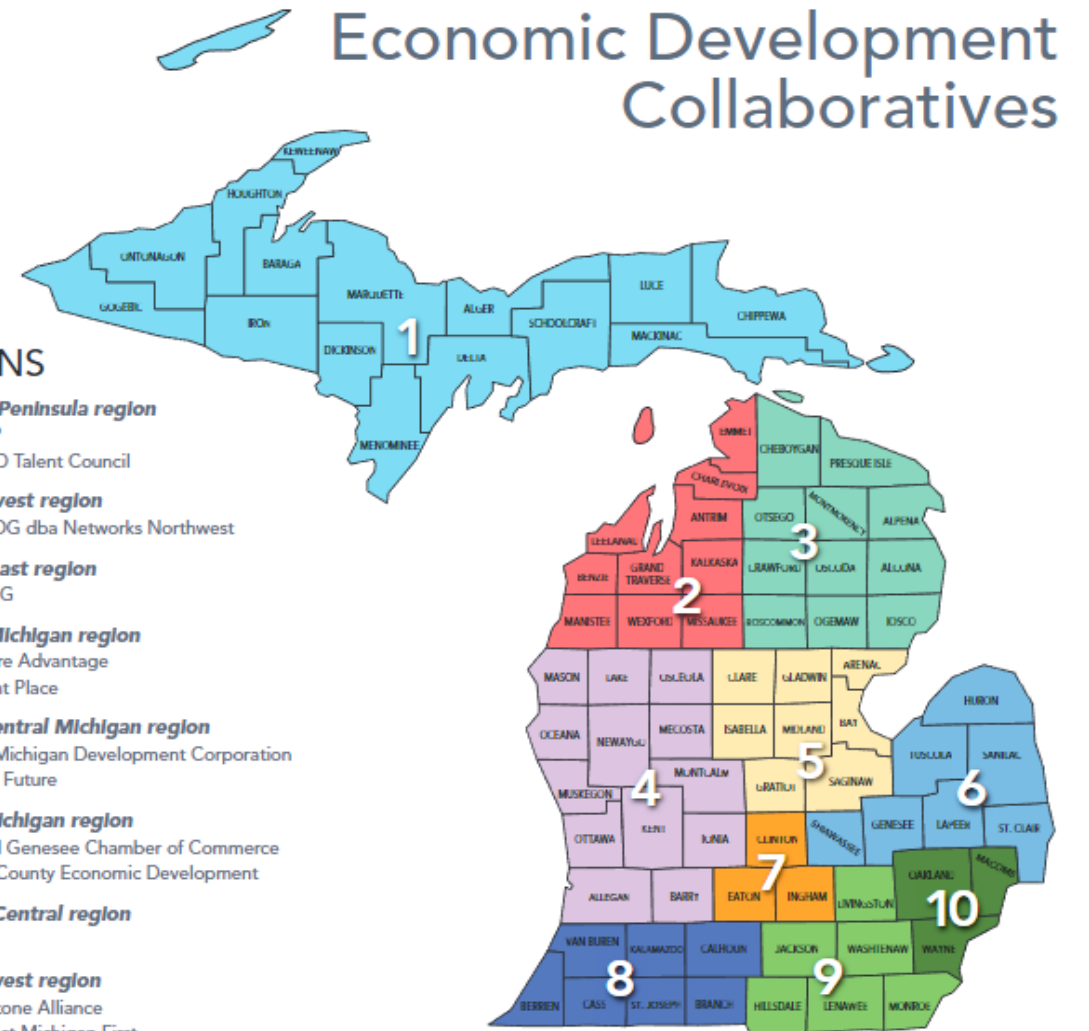
- Upon receipt by ECIC of a countersigned copy of the Subrecipient Agreement by an authorized officer of the Subrecipient, payments will be made by ECIC on a reimbursement basis for actual agreement expenditures incurred during the award period.



Statewide Impact



Regional Child Care Coalitions **must be led or co-led by an economic development organization.**



REGIONS

- 1 Upper Peninsula region**
InvestUP
UPWARD Talent Council
- 2 Northwest region**
NWMCOG dba Networks Northwest
- 3 Northeast region**
NEMCOG
- 4 West Michigan region**
Lakeshore Advantage
The Right Place
- 5 East Central Michigan region**
Middle Michigan Development Corporation
Saginaw Future
- 6 East Michigan region**
Flint and Genesee Chamber of Commerce
Tuscola County Economic Development
- 7 South Central region**
LEAP
- 8 Southwest region**
Cornerstone Alliance
Southwest Michigan First
- 9 Southeast Michigan region**
Ann Arbor SPARK
- 10 Detroit Metro region**
Detroit Economic Growth Corp
Detroit Regional Partnership
Macomb County PED
Oakland County PCD
Wayne County EDGE

These collaboratives begin with the alignment of service providers, creating teams to serve each region. Regional teams are comprised of representatives from the following:

- | | |
|---|--|
| MEDC Business Development Managers | Michigan Dept. of Transportation (MDOT) |
| MEDC Community Assistance Team | Michigan Manufacturing Technology Center (MMTC) |
| MEDC Development Project Managers | Michigan Small Business Center (MI-SBDC) |
| MEDC International Trade Managers | Michigan State Housing Development Authority (MSHDA) |
| Michigan Dept. of Agriculture and Rural Development (MDARD) | Procurement Technical Assistance Centers (PTACs) |
| Michigan Dept. of Environmental Quality (MDEQ) | Other state and federal agencies |
| Michigan Dept. of Natural Resources (MDNR) | |

Statewide Impact

Regional Child Care Coalitions must be led or co-led by an economic development organization.

Regional Coalition Lead	Regional Coalition Co-Lead
Signs the contract with ECIC	N/A
Serves as the fiduciary and is responsible for the development of the budget, budget narrative and accountable for reporting on spending	Consulted in the development of the budget, budget narrative
Accountable for meeting federal requirements for the use of these funds	Informed about how the use of these funds by the Regional Coalition Lead aligns with federal requirements
Accountable for the successful implementation of the Scope of Work (see below) including the achievement of required metrics and the completion of timely, required written reports	Responsible for co-leading the implementation of the Scope of Work, including the achievement of required metrics and the completion of required written reports
Accountable for attendance at technical assistance sessions, including orientation session, monthly peer learning community of practice, and bi-monthly progress meetings	Responsible for co-leading the incorporation of knowledge and resources gained from ECIC's technical assistance into the Regional Coalition's work
Responsible for assigning qualified personnel	N/A

Scope of Work

MiLEAP has determined the Scope of Work for Regional Child Care Coalitions, as follows:

- 1** **Support the region's child care business owners and non-profits**, including community-based organizations who want to participate in Pre-K for All
- 2** **Increase access to full day/full year child care**, especially infant and toddler child care, through increasing child care supply
- 3** **Address the early childhood workforce gap** in the region, through various collaborative strategies such as wage supplements, benefits and making connections between child care employers and workforce supports like early care and education registered apprenticeship programs.
- 4** **Ensure family choice/voice in child care supply building** through including parents as members of the Regional Child Care Coalition, and engaging parents in the larger region with support from Regional Child Care Coalition members
- 5** **Use convening power to bring together existing child care and Pre-K navigation resources** to improve coordination and alignment, helping all working parents in the region successfully search for child care and apply for child care and Pre-K funding
- 6** **Ensure engagement and information sharing** for recruitment of more employers, child care businesses and non-profits for TriShare.

Regional Child Care Coalitions Project Timeline

Pre-Award

Pre-app
TA to potential
subrecipients

Grant Review &
Selection



Period of Performance & Subrecipient Monitoring

Subrecipient contract period



Technical Assistance

Individualized technical assistance



Monthly Learning Communities & On-Demand Consultation
Parent TA - National Center



Dissemination of comms and TA resources for families



Jan

Feb

Mar

Apr

May

Jun

Jul

Aug

Sep

Regional Coalitions Membership

Each Regional Coalition must include the following members:

- EDO as lead or co-lead
- Local government staff members with local zoning knowledge and expertise
- Individuals representing the child care sector including child care programs which are licensed by the State of Michigan or Tribal programs
- Parents of young children with expertise in seeking and utilizing high quality child care for children from birth to age twelve
- Intermediate School District (ISD) Early Childhood Lead(s) from the MEDC region
- Great Start Collaborative Director(s) from the MEDC region
- Great Start Family Liaison(s) from the MEDC region
- Great Start to Quality Resource Center Director(s) from the MEDC region
- TriShare Hub Lead(s) from the MEDC region

Performance Metrics

Regional Child Care Coalitions will be funded to improve from baseline (April 2025), the metrics below:

Metric	Source	April 2025	Sep 2025
Infant and Toddler Child Care – licensed capacity in the region	MSU Maps		
Community-based Organizations in Pre-K for All	ISD or RESA		
Full day/Full Year Care - licensed capacity in the region	MSU Maps		
Businesses participating in Tri-Share	Tri-Share Lead		
Child Care Providers participating in Tri-Share	Tri-Share Lead		
Parent members of Regional Coalition	Coalition Roster		
Parents engaged in Regional Coalition activities	Coalition Tracking		
Parent attendance at National Center learning opportunities	Coalition Tracking		

The following metrics will be addressed in Narrative Reporting:

- Support the region’s child care and Pre-K navigation resources to be more coordinated and aligned
- Convene and engage Regional Child Care Coalitions and community partners in achieving the strategies and activities in the Project Plan, and the ongoing identification of unmet child care needs and gaps in the region

Progress Reporting

Bi-Monthly Progress Meetings

- ECIC's Innovation Fund Team will facilitate every other month (bi-monthly) progress meetings with subrecipients beginning April 2025 and every other month thereafter.

Narrative and Metrics Reporting

- ECIC will support subrecipients to complete required baseline, quarterly, and year-end reports
 - Baseline – April 2025
 - Year end – September 2025



Application Timeline

1

Application Opens

January 3, 2025 at
10:00am EST

2

Application Closes

January 31, 2025
5:00pm EST

3

Application Review

February 2025

4

Awardees Notified

March 2025

5

Initial Period of Performance

March 2025 –
September 2025



Answering your questions

Working in Partnership with ECIC

Task	Applicant Will	ECIC Will
<p>A Coalition must include parents of children from birth to age 12, with expertise in seeking and utilizing high quality child care</p>	<ul style="list-style-type: none"> • Budget for parent leader compensation for Coalition meetings and technical assistance. • Grow internal organizational capacity, as needed, to welcome parents as equal partners in carrying out and achieving the Scope of Work for the Regional Child Care Coalitions • Take advantage of opportunities for parent leadership development through training, consultation, coaching, and communities of practice, to support parents as leaders 	<ul style="list-style-type: none"> • Share capacity with Regional Child Care Coalitions so they have the internal organizational capacity to include parents as equal partners • Facilitate opportunities for parent leadership development for parents on Regional Child Care Coalitions and Great Start Family Coalitions in the region • Develop and disseminate strategic communications resources and technical assistance resources for families
<p>A Coalition must include individuals representing the child care sector</p>	<ul style="list-style-type: none"> • Budget for child care business owner/child care provider compensation for Regional Child Care Coalition meetings 	<ul style="list-style-type: none"> • Provide technical assistance to Lead/Co-Lead Regional Child Care Coalitions on effective practices for compensating child care business owners/child care providers for their expertise

Working in Partnership with ECIC Cont.

Task	Applicant Will	ECIC Will
<p>A Coalition will effectively carry out the required Scope of Work</p>	<ul style="list-style-type: none"> • Engage in Regional Child Care Coalition monthly learning community • Develop new partnerships, further develop and implement a regional action plan that will expand access to quality, affordable child care for working families in the region 	<ul style="list-style-type: none"> • Plan and provide Regional Child Care Coalition monthly learning community • Provide templates and resources for required activities • Offer consultation and coaching for Coalition co-leads and required members
<p>Comply with state and federal requirements</p>	<ul style="list-style-type: none"> • Prepare and submit accurate and timely reports on progress and spending using ECIC provided templates • Participate in bi-monthly progress meetings 	<ul style="list-style-type: none"> • Support Regional Child Care Coalitions in reporting on progress and spending • Help Regional Child Care Coalitions to ensure they meet federal guidelines for the use of funds

Strategic Partners



Sarah Zyburt

Program Manager, Center
for Family & Parent
Leadership, ECIC



Maria Ortiz Borden

Co-Executive Director,
Pulse @ the W.E. Upjohn
Institute for Employment
Research



Kathy Szenda Wilson

Co-Executive Director,
Pulse @ the W.E. Upjohn
Institute for Employment
Research



Erin Watson

Owner/Principal Associate,
Weaving Change, LLC

Strategic Partners



ECIC's Child Care Innovation Fund

- Serve as the lead for this collaborative team and administer the regional planning grants with our shared goal to accelerate community-level efforts to address Michigan's child care crisis

National Center for Family and Parent Leadership at ECIC

- Lead the design and facilitation of technical assistance opportunities and resources for families and parents, including Great Start Family Coalitions, to increase their engagement in building their local child care systems, broadly, and strengthen their connections with lead grantees for Regional Coalitions.

Pulse at the W.E. Upjohn Institute for Employment Research

- Provide technical assistance support, resources and coordination to enable the 10 Regional Coalitions and TriShare Hubs to increase and optimize innovation.

Weaving Change, LLC

- Lead the evaluation of the impact and continuous improvement of this grant.

Working in Partnership: National Center for Family and Parent Leadership at ECIC

The National Center for Family and Parent Leadership will:

- Plan/facilitate/host a parent/family leadership summit
- Provide technical assistance resources
- Provide parent/family leadership for child care – ensuring family choice and voice
- Share capacity for RCCC to welcome parents/families as equal partners
- Connect parent/family leaders to leadership development opportunities and resources to support their successful partnership



Strategic Partnership: Pulse @ W.E. Upjohn Institute

Pulse will:

- Create and promote child care/family friendly accreditation for employers
- Hold second annual Child Care Champions Event in partnership with ECIC
- Provide technical assistance to all Regional Coalitions in support of their employer-focused efforts to include increasing number of employers participating in Tri-Share.



Working in Partnership: Weaving Change, LLC

Weaving Change will:

- Provide coalitions with information about the current state of the system conditions they are trying to change in their region
- Co-design evaluation tools to help coalitions understand the changes they are helping to bring about in their region
- Meet individually with leads from each coalition to explore ways to use what we're learning to guide their decision-making and strategies





Answering your questions

Preparing your Application in Fluxx

- 1 Access the “Fluxx How-to Document” linked on our website and within the RFP for detailed, step-by-step instructions
- 2 Register your organization in the Fluxx portal
- 3 Receive approval email from Fluxx to log into portal
- 4 Apply for the relevant competitive funding opportunity

Selection Criteria

Review Process

Award selection will be based on merit and quality, as determined by points awarded for the review criteria section and all relevant information.

Application rubrics will be used as a rating instrument in the review process.

The application maximum score is 70 Points.

Applicants with an application score below **60 points** will not be recommended for funding.

** All awards will be subject to approval by the Michigan Department of Lifelong Education, Advancement, and Potential (MiLEAP). All applicants will be notified of MiLEAP's action.*

Geographic Area of Regional Child Care Coalition

No points awarded

1. Select region to be covered by Regional Child Care Coalition's work [drop down of MEDC regions]

Economic Development Collaboratives



REGIONS

- 1 Upper Peninsula region**
InvestUP
UPWARD Talent Council
- 2 Northwest region**
NWMCOG dba Networks Northwest
- 3 Northeast region**
NEMCOG
- 4 West Michigan region**
Lakeshore Advantage
The Right Place
- 5 East Central Michigan region**
Middle Michigan Development Corporation
Saginaw Future
- 6 East Michigan region**
Flint and Genesee Chamber of Commerce
Tuscola County Economic Development
- 7 South Central region**
LEAP
- 8 Southwest region**
Cornerstone Alliance
Southwest Michigan First
- 9 Southeast Michigan region**
Ann Arbor SPARK
- 10 Detroit Metro region**
Detroit Economic Growth Corp
Detroit Regional Partnership
Macomb County PED
Oakland County PCD
Wayne County EDGE

These collaboratives begin with the alignment of service providers, creating teams to serve each region. Regional teams are comprised of representatives from the following:

- | | |
|---|--|
| MEDC Business Development Managers | Michigan Dept. of Transportation (MDOT) |
| MEDC Community Assistance Team | Michigan Manufacturing Technology Center (MMTC) |
| MEDC Development Project Managers | Michigan Small Business Center (MI-SBDC) |
| MEDC International Trade Managers | Michigan State Housing Development Authority (MSHDA) |
| Michigan Dept. of Agriculture and Rural Development (MDARD) | Procurement Technical Assistance Centers (PTACs) |
| Michigan Dept. of Environmental Quality (MDEQ) | Other state and federal agencies |
| Michigan Dept. of Natural Resources (MDNR) | |

Regional Coalition Lead

5 points total

2. What organization will serve as the Regional Child Care Coalition Lead? **(No points awarded)**
3. Identify the organizational status of the Lead, i.e., public, or private for-profit, nonprofit, or governmental legal entity or agency. **(No points awarded)**
4. Did the proposed Regional Child Care Coalition Lead serve as the lead grantee for a Regional Child Care Coalition grant? [yes/no] **(No points awarded)**
5. What responsibilities did the proposed Regional Child Care Coalition Lead carry out in the Regional Child Care Coalition work? **(5 points possible)**

Not Recommended for Funding (0-2 points per box)	Recommended for Funding (3-4 points per box)	Highly Recommended for Funding (5 points per box)
The application: Does not provide a description of the Lead's responsibilities in carrying out Regional Child Care Coalition work	The application: Includes a partial description of the Lead's responsibilities in carrying out Regional Child Care Coalition work	The application: Includes a full description of the Lead's responsibilities in carrying out Regional Child Care Coalition work

Regional Coalition Co-Lead

5 points total

6. What organization will serve as the Regional Child Care Coalition Co-Lead? **(No points awarded)**
7. Identify the organizational status of the Co-Lead, i.e., public, or private for-profit, nonprofit, or governmental legal entity or agency. **(No points awarded)**
8. Did the proposed Regional Child Care Coalition Co-Lead serve as the lead grantee for a Regional Child Care Coalition grant? [yes/no] **(No points awarded)**
9. What responsibilities did the proposed Regional Child Care Coalition Co-Lead carry out in the Regional Child Care Coalition work? **(5 points possible)**

Not Recommended for Funding (0-2 points per box)	Recommended for Funding (3-4 points per box)	Highly Recommended for Funding (5 points per box)
The application: Does not provide a description of the Co-Lead's responsibilities in carrying out Regional Child Care Coalition work	The application: Includes a partial description of the Co-Lead's responsibilities in carrying out Regional Child Care Coalition work	The application: Includes a full description of the Co-Lead's responsibilities in carrying out Regional Child Care Coalition work



Answering your questions

Prior Experience

5 points total

10. Describe the prior experience of the Regional Child Care Coalition Lead and Co-Lead in planning for and/or implementing the following strategies, including examples:
- a) Supporting the region's child care business owners and non-profits
 - b) Increasing access to full day/full year child care, especially infant and toddler child care
 - c) Addressing the early childhood workforce gap in the region
 - d) Engaging and including parents in the region's Child Care Coalition
 - e) Using convening power to bring together people and organizations in the region to help parents find, afford, and access child care and/or Pre-K
 - f) Engaging with the region's employers to understand and address their child care needs

Not Recommended for Funding (0-2 points per box)	Recommended for Funding (3-4 points per box)	Highly Recommended for Funding (5 points per box)
The application: Does not provide a description of the Lead and Co-Lead's experiences in planning/implementing strategies a-f.	The application: Includes a partial description of the Lead and Co-Lead's experiences in planning/implementing strategies a-f.	The application: Includes a full description and examples of the Lead and Co-Lead's experiences in planning/implementing strategies a-f.

Alignment with Organizational Mission & Goals

5 points total

1. Describe how serving as the Regional Child Care Coalition Lead/Regional Child Care Coalition Co-Lead aligns with their respective organizational missions and goals. **(5 points possible)**

Not Recommended for Funding (0-2 points per box)	Recommended for Funding (3-4 points per box)	Highly Recommended for Funding (5 points per box)
The application: Does not provide a description of how the Regional Child Care Coalition work aligns with organizational missions and goals of Lead/Co-Lead	The application: Includes a partial description of how the Regional Child Care Coalition work aligns with organizational missions and goals of Lead/Co-Lead	The application: Includes a full description of how the Regional Child Care Coalition work aligns with organizational missions and goals of Lead/Co-Lead

The Regional Child Care Coalition

5 points total

- 12. Is the Regional Child Care Coalition: **(no points awarded)**
 - a) Brand new for the purposes of this grant?
 - b) Already existing, was one of the prior Regional Child Care Planning Coalition's?
 - c) Other? [check boxes + input section [text limit]]
- 13. Upload intended Regional Child Care Coalition's Membership Roster, using the required template. **(5 points possible)**

Not Recommended for Funding (0-2 points per box)	Recommended for Funding (3-4 points per box)	Highly Recommended for Funding (5 points per box)
<p>The application:</p> <p>Membership roster contains few to no required members and does not identify their contributions: regional economic development organization, local government, parents of children birth to age 12, child care sector representatives, ISD Early Childhood lead, TriShare Hub lead, Great Start Collaborative Director and Great Start Family Liaison, Great Start to Quality Resource Center Director</p>	<p>The application:</p> <p>Membership roster contains some of the required members and/or identifies only some of the member contributions: regional economic development organization, local government, parents of children birth to age 12, child care sector representatives, ISD Early Childhood lead, TriShare Hub lead, Great Start Collaborative Director and Great Start Family Liaison, Great Start to Quality Resource Center Director</p>	<p>The application:</p> <p>Membership roster contains all of the required members and every member's contributions: regional economic development organization, local government, parents of children birth to age 12, child care sector representatives, ISD Early Childhood lead, TriShare Hub lead, Great Start Collaborative Director and Great Start Family Liaison, Great Start to Quality Resource Center Director</p>

The Regional Child Care Coalition cont.

5 points total

14. Using the membership roster, describe the Regional Child Care Coalition, including: its overall strengths and needs in carrying out the required Scope of Work successfully; its activities to date; and notable related accomplishments of member organizations. **(5 points possible)**

Not Recommended for Funding (0-2 points per box)	Recommended for Funding (3-4 points per box)	Highly Recommended for Funding (5 points per box)
The application: Does not provide a description of the Regional Child Care Coalition that includes its overall strengths and needs in carrying out the required Scope of Work successfully; its activities to date; and notable related accomplishments of member organizations.	The application: Includes a partial description of the Regional Child Care Coalition that includes its overall strengths and needs in carrying out the required Scope of Work successfully; its activities to date; and notable related accomplishments of member organizations.	The application: Includes a full description of the Regional Child Care Coalition that includes its overall strengths and needs in carrying out the required Scope of Work successfully; its activities to date; and notable related accomplishments of member organizations.



Answering your questions

Regional Child Care Coalition Members

5 points total

15. Describe how the Regional Child Care Coalition proposes to support the leadership/collaboration of parents of children from birth to age 12 and child care business owners/providers as members of the Coalition. **(5 points possible)**

Not Recommended for Funding (0-2 points per box)	Recommended for Funding (3-4 points per box)	Highly Recommended for Funding (5 points per box)
The application: Does not provide a description of how the Regional Child Care Coalition proposes to support the leadership/collaboration of parents of children from birth to age 12 and child care business owners/providers as members of the Coalition	The application: Includes a partial description of how the Regional Child Care Coalition proposes to support the leadership/collaboration of parents of children from birth to age 12 and child care business owners/providers as members of the Coalition	The application: Includes a full description of how the Regional Child Care Coalition proposes to support the leadership/collaboration of parents of children from birth to age 12 and child care business owners/providers as members of the Coalition

Regional Child Care Coalition Members Cont.

5 points total

16. Describe how partnering with parent leaders will add value to the work of the Regional Child Care Coalition and why partnering with families is important to the success of this initiative in the region. **(5 points possible)**

Not Recommended for Funding (0-2 points per box)	Recommended for Funding (3-4 points per box)	Highly Recommended for Funding (5 points per box)
The application: Does not provide a description of how partnering with parent leaders will add value to the work of the Regional Child Care Coalition and why partnering with families is important to the success of this initiative in the region.	The application: Includes a partial description of how partnering with parent leaders will add value to the work of the Regional Child Care Coalition and why partnering with families is important to the success of this initiative in the region.	The application: Includes a full description of how partnering with parent leaders will add value to the work of the Regional Child Care Coalition and why partnering with families is important to the success of this initiative in the region.

The Regional Child Care Industry

5 points total

17. Describe the Regional Child Care Coalition's current understanding of the region's child care industry and the role the region's economic development organization(s) will play in sustaining and expanding the industry in the region, including examples. (Option to upload example document)

Not Recommended for Funding (0-2 points per box)	Recommended for Funding (3-4 points per box)	Highly Recommended for Funding (5 points per box)
The application: Does not provide a description of the Regional Child Care Coalitions current understanding of the region's child care industry and the role the region's economic development organization(s) will play in sustaining and expanding the industry in the region.	The application: Includes a partial description of the Regional Child Care Coalitions current understanding of the region's child care industry and the role the region's economic development organization(s) will play in sustaining and expanding the industry in the region.	The application: Includes a full description with examples of the Regional Child Care Coalitions current understanding of the region's child care industry and the role the region's economic development organization(s) will play in sustaining and expanding the industry in the region.

The Regional Child Care Coalition Project Plan

10 points total

18. Upload the Regional Child Care Coalition Project Plan, using the required template **(5 points possible)**
19. How does the proposed Project Plan leverage the region's existing economic development organization's network? **(5 points possible)**

Not Recommended for Funding (0-2 points per box)	Recommended for Funding (3-4 points per box)	Highly Recommended for Funding (5 points per box)
The application: Does not include a proposed project plan	The application: Includes a partial proposed project plan. Plan is missing strategies, required activities, deliverables, or timelines.	The application: Includes a full proposed project plan, with proposed strategies, all required activities, deliverables, and timelines. Full descriptions are provided for how the key activities will be carried out.
Does not provide a description of how the proposed Project Plan leverages the region's existing economic development organization's network	Includes a partial description of how the proposed Project Plan leverages the region's existing economic development organization's network	Provides a full description of how the proposed Project Plan leverages the region's existing economic development organization's network

The Regional Child Care Coalition Project Plan Cont.

5 points total

20. Provide a rationale - including the data used to identify the proposed tasks - for how the approach the Regional Child Care Coalition proposes in the Project Plan will:
- a. Increase or expand the supply of child care providers of all types
 - b. Assist families navigating access to child care and Pre-K
 - c. Support more child care business owners and non-profits to:
 - i. Sustain, thrive, and if desirable expand
 - ii. Participate in Pre-K for All, if an eligible and interested community-based organization, and
 - iii. Connect to early care and education workforce resources. **(5 points possible)**

Not Recommended for Funding (0-2 points per box)	Recommended for Funding (3-4 points per box)	Highly Recommended for Funding (5 points per box)
<p>The application:</p> <p>Does not provide a rationale for how the Regional Child Care Coalition’s approach in the project plan will: increase or expand the supply of child care providers of all types; assist families navigating access to child care and Pre-K; support more child care business owners and non-profits to sustain, thrive, and if desirable expand, participate in Pre-K for All, and connect to early care and education workforce resources.</p>	<p>The application:</p> <p>Provides a limited rationale for how the Regional Child Care Coalition’s approach in the project plan will: increase or expand the supply of child care providers of all types; assist families navigating access to child care and Pre-K; support more child care business owners and non-profits to sustain, thrive, and if desirable expand, participate in Pre-K for All, and connect to early care and education workforce resources.</p>	<p>The application:</p> <p>Provides a full, detailed rationale for how the Regional Child Care Coalition’s approach in the project plan will: increase or expand the supply of child care providers of all types; assist families navigating access to child care and Pre-K; support more child care business owners and non-profits to sustain, thrive, and if desirable expand, participate in Pre-K for All, and connect to early care and education workforce resources.</p>



Answering your questions

Sustainability

5 points total

21. Describe the region's experience and success leveraging financial and/or in-kind resources to support the implementation of the Region's Child Care Action Plan, including examples. [Option to upload example document]

Not Recommended for Funding (0-2 points per box)	Recommended for Funding (3-4 points per box)	Highly Recommended for Funding (5 points per box)
The application: Does not provide a description of the region's experience and success leveraging financial and/or in-kind resources to support the implementation of the Region's Child Care Action Plan	The application: Provides a limited description of the region's experience and success leveraging financial and/or in-kind resources to support the implementation of the Region's Child Care Action Plan	The application: Provides a full description, including examples, of the region's experience and success leveraging financial and/or in-kind resources to support the implementation of the Region's Child Care Action Plan

Quality of Personnel

5 points total

22. Identify all individuals – employees and independent consultants - who are proposed to be associated with the project and its implementation. The applicant should address the qualities and qualifications of each individual. Individuals who work on this project should be highly qualified to develop, administer, and successfully implement the project. Highly qualified personnel would have direct experience with building regional partnerships, working collaboratively across sectors, and understand child care as a critical component of the region's infrastructure that supports economic growth.

Not Recommended for Funding (0-2 points per box)	Recommended for Funding (3-4 points per box)	Highly Recommended for Funding (5 points per box)
The application: Does not identify all individuals associated with the project and/or does not address the qualities and qualifications of each individual.	The application: Only identifies some individuals associated with the project and/or partially address the qualities and qualifications of each individual.	The application: Provides full identification of individuals associated with the project and implementation and provides the qualities and qualifications of each individual

Budget

To be approved by Program Team, Compliance, and Finance outside of external reviews

23. Upload the Budget and Budget Narrative, adhering to the provided budget guidelines
24. Complete the Subrecipient Risk Assessment Questionnaire

No Rubric

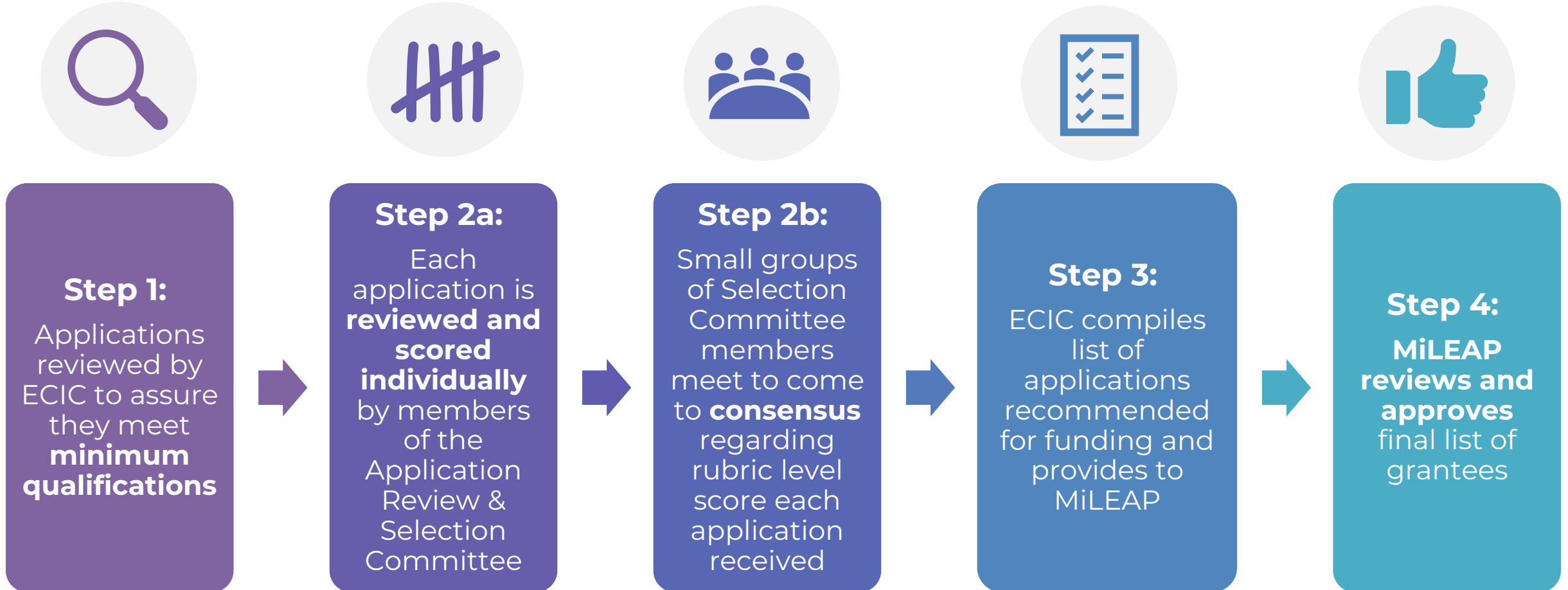


Answering your questions



Application Review & Selection Process

4-Step Review Process



Centering Equity in Review



All reviewers complete & sign **conflict of interest form** prior to application assignment



Internal training provided to all reviewers



Conflict of interest acknowledgment within application scoring portal



Educational resources on identifying and addressing personal biases provided to all reviewers



Multi-step review process, where **multiple reviewers score the same applications**



Identification of divergent scores and use of **small group consensus scoring**



Published rubric with scoring criteria shared and used across review teams

Application Assistance

Supportive Documents + Materials (posted on ECIC's website)

- RFP
- FAQ Document
- Fluxx How to Document
- Recorded Applicant Webinar
- Applicant Webinar slides

Email

- Email any questions or inquiries to technicalassistance@ecic4kids.org

Office Hours

- Appointments are available January 8th – 30th, 2025
- Must be requested through email at technicalassistance@ecic4kids.org
- Use scheduling link to choose a time/date that works best for you

Regional Child Care Planning Report Release Webinar

- January 15, 2025 from 1-2pm





Answering your questions

THIS WEBINAR HAS ENDED

**THANK
YOU**

Have additional questions or want to follow up on something you heard in this webinar?

Please use the following information to reach out to the Child Care Innovation Fund:



technicalassistance@ecic4kids.org

**CHILD CARE
INNOVATION
FUND**

 **Early Childhood
Investment Corporation**